



Sheppard

Mill Road | Lisvane | Cardiff | CF14 0XL

£770,000



Sheppard & Bear

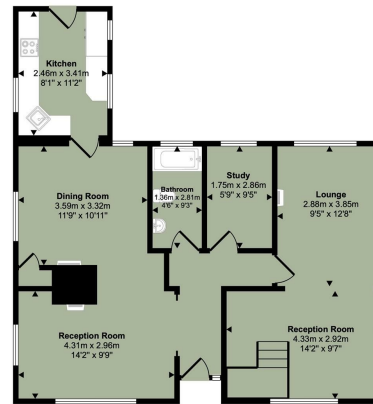
Mill Road | Lisvane
Cardiff | CF14 0XL
£770,000

Situated on one of Lisvane's most prestigious roads, this impressive extended detached dormer bungalow offers an exceptional blend of space, versatility and lifestyle. Beautifully presented throughout, the accommodation comprises an inviting entrance hall, fitted kitchen, elegant living room, dining room, home office, cloakroom and a substantial family room, creating the perfect environment for both everyday family life and entertaining. To the first floor are four generously proportioned double bedrooms and a family bathroom. A particular highlight of this wonderful home is the stunning landscaped rear garden, thoughtfully designed to create a private oasis. At its heart lies a heated swimming pool, offering a lifestyle feature rarely found in Cardiff's residential market. As the UK continues to enjoy longer summers and increasingly warmer weather, this exceptional outdoor space provides the perfect setting for family gatherings, entertaining

- Detached Dormer Bungalow
- Two/three reception rooms
- Detached double garage
- Viewing highly recommended
- Four double bedrooms
- Two bathrooms
- Heated outdoor swimming pool

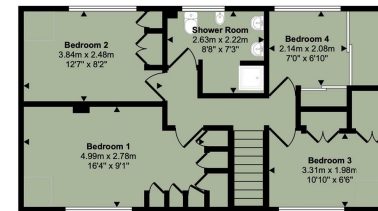


Approx Gross Internal Area
132 sq m / 1420 sq ft



Ground Floor
Approx 78 sq m / 838 sq ft

□ Denotes head height below 1.5m



First Floor
Approx 54 sq m / 582 sq ft

This floorplan is only for illustrative purposes and is not to scale. Measurements of rooms, doors, windows, and any items are approximate and no responsibility is taken for any error, omission or mis-statement. Icons of items such as bathroom suites are representations only and may not look like the real items. Made with Made Snappy 360.

Energy Efficiency Rating		Current	Potential
Very energy efficient - lower running costs			
(92 plus) A			
(81-91) B			
(69-80) C			
(55-68) D			
(39-54) E		43	
(21-38) F			
(1-20) G			
Not energy efficient - higher running costs			
England & Wales	EU Directive 2002/91/EC		

Council Tax Band H
EPC Rating E

Cyncoed
Cardiff
CF23 6SZ
02921 051927
gavin@sheppardandbear.com